

## INTRODUCTION

**ARIES PRECISION TECHNOLOGIES** is a ISO 9001: 2008 certified manufacturing firm, engaged in sheet metal fabrication since 2006.

The firm works closely with customers with its considerable expertise and leading edge equipment, ensuring best solution at the best price.

Consequently, the firm has made its mark in the field, for precision and high end fabrication services.

## PROMOTERS

***Mr.D.G.Shankar M.Tech***

***Mr..N.Niranjana DME***

***Mr.B.A.Ramanna DME***



## OUR VISION

**To become one of the esteemed leaders in manufacturing of precision sheet metal products to OEM's .**



## OUR MISSION

**To provide competitive and innovative solutions to meet the needs of the Customers and delight.**



## CORE VALUES

**Passion , accountability , sincerity and commitment to deliveries with high quality standards**



APT operates from two locations at Peenya Industrial Area, Bangalore

## FACILITIES

**Unit-1:** CNC Punching, Laser cutting, bending & welding services.  
 Working area-8,000 sft with 125KW power connection.

**Unit-II:** Welding & fabrication services and Powder coating services.  
 Working area-15000 sft with 60KW power connection



### UNIT - 1

A-352[a], 8th Main, 2nd Stage,  
 Peenya Industrial Area,  
 Bangalore-560 058

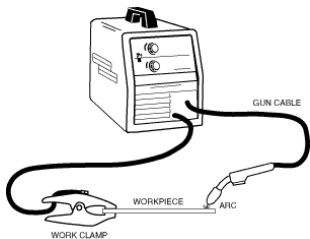
### UNIT - 2

No.09, Sy.No. 126/1,  
 Near Kempaiah Garden  
 Nelagadarana Halli  
 Bangalore-560 073



## LIST OF MACHINES

SL.NO	MACHINE NAME	SERIAL NO	MAKE	POWER	MACHINE MAXIMUM CAPACITY
1	CNC TURRET PUNCHING MACHINE	APT-M-01	AMADA ARIES 255	20 TONS	Cutting Range: Sheet Thickness 0.5mm to 3mm; Max Size : 1250 x 3000mm
2	CNC PRESS BRAKE	APT-M-02	AMADA RG80	80 TONS	Bending Range: Sheet Thickness 0.2mm to 8mm; Max Length 2500mm
3	LASER CUTTING MACHINE	APT-M-03	AMADA FO3015	4 KW	Sheet range-0.5mm to 20mm Thick and Max length 3000mm
4	CNC PRESS BRAKE	APT-M-04	ERMAKSON	40 TONS	Sheet 0.5mm to 6mm Thick , Max length : 1000mm
5	GANTRY CRANE	APT-M-05	AB&CO	12 HP	Capacity 5 Tons
6	AIR COMPRESSOR	APT-M-06	MR COMPRESSORS	5 HP	Line pressure at 6 bar
7	AIR COMPRESSOR	APT-M-07	MR COMPRESSORS	15 HP	Line pressure at 6 bar
8	AIR DRYER	APT-M-08	PURONICS	30 CFM	Dry cartridge type 99.9%
9	GENERATOR	APT-M-09	DPK	125 KW	Diesel engine
10	MIG WELDING MACHINE	APT-M-10	SUNNYWELD	250Amps	Maximum load 250amps(MIG)
11	MIG WELDING MACHINE	APT-M-11	SUNNYWELD	250Amps	Maximum load 250amps(MIG)
12	SANDING MACHINE	APT-M-12	BOSCH	230V 1 phase	DIA 4"
13	HAND DRILLING MACHINE	APT-M-13	BOSCH	230V 1 phase	Maximum hole size 12mm
14	PALLET TRUCK	APT-M-14	DILIP MACHINES	Hydraulic	Maximum lifting load 3 Tons
15	FORK LIFT MACHINE	APT-M-15	DILIP MACHINES	Hydraulic	Maximum lifting load 1 Ton
16	CUT-OFF MACHINE	APT-M-16	SPR IND HD 355	230v 3 phase	dia 14"wheel
17	MIG WELDING MACHINE	APT-M-17	SUNNYWELD	250Amps	Maximum load 250amps(MIG)
18	MIG WELDING MACHINE	APT-M-18	SUNNYWELD	250Amps	Maximum load 250amps(MIG)
19	MIG WELDING MACHINE	APT-M-19	SUNNYWELD	250Amps	Maximum load 250amps(MIG)
20	MIG WELDING MACHINE	APT-M-20	SUNNYWELD	250Amps	Maximum load 250amps(MIG)



## LIST OF MACHINES . . . . CONTD.

21	MIG WELDING MACHINE	APT-M-21	SUNNYWELD	250Amps	Maximum load 250amps(MIG)
22	MIG WELDING INVERTER MACHINE	APT-M-22	BOC	250Amps	Maximum load 250amps(MIG)
23	DRILLING MACHINE	APT-M-23	LUDHIANA	3HP	Maximum hole size 12.5mm
24	STUD WELDING MACHINE	APT-M-24	SP -M6	230V 3 phase	Capacity upto M6
25	ROLLING MACHINE	APT-M-25	LUDHIANA	Manual	Capacity upto 2mm thk, Length 800mm
26	TAPPING MACHINE	APT-M-26	LUDHIANA	2HP	Capacity upto M8
27	GENERATOR	APT-M-27	KIRLOSKAR	15 KW	Diesel engine
28	CUT-OFF MACHINE	APT-M-28	DEWALT	230v 3 phase	dia 18"wheel
29	SANDING MACHINE	APT-M-29	BOSCH	230V 1 phase	DIA 4"
30	SANDING MACHINE	APT-M-30	BOSCH	230V 1 phase	DIA 4"
31	SANDING MACHINE	APT-M-31	BOSCH	230V 1 phase	DIA 4"
32	SANDING MACHINE	APT-M-32	BOSCH	230V 1 phase	DIA 4"
33	SANDING MACHINE	APT-M-33	BOSCH	230V 1 phase	DIA 6"



## PERFORMANCE

Financial year	Business turnover [Rs in millions]
2012-13	73
2013-14	82
2014-15	86
2015-16	92
2016-17	108
2017-18	116



## CERTIFICATIONS

### ISO 9001:2015

*Certificate of Registration*

This is to Certify that  
Quality Management System of

**ARIES PRECISION TECHNOLOGIES**  
A - 352(A), 8 TH MAIN, 2 ND STAGE, PEENYA INDUSTRIAL AREA,  
BENGALURU - 560 058, INDIA  
SY. NO. 126/1, SITE NO. 9, BEHIND KEMPAIAH GARDEN,  
( NEAR BMTC 9 TH DEPOT), NELAGADARANAHALLI,  
BENGALURU - 560 073, INDIA

has been assessed and found to conform to the requirements of  
**ISO 9001:2015**  
for the following scope :

**MANUFACTURE OF SHEET METAL PRODUCTS**

Certificate No : 1016QEJ95  
Initial Registration Date : 04/08/2016 Issuance Date : 04/09/2016  
Date of Expiry\* : 03/08/2019  
1st Surve. Due : 04/07/2017 2nd Surve. Due : 04/07/2018

**Director**

**IAF** MEMBER OF MULTILATERAL RECOGNITION ARRANGEMENT

**JAS-ANZ**

MA570910M  
Absolute Quality Certification Pvt. Ltd.  
Recognized By: Joint Accreditation System of Australia & New Zealand (JAS-ANZ)  
101, Ashok Bhawan, 93, Noida Place, New Delhi - 110 018, | +91. 11. 4105 1139 | e-mail : info@absolutequalitycertification.com  
Validity of this certificate is subject to successful completion of surveillance audits on or before of due date. In case surveillance audits is not allowed to be conducted, this certificate shall be suspended/withdrawn.  
Certificate Verification: Please do check the validity of certificate at <http://www.absolutequalitycertification.com/verify.htm> or [info@absolutequalitycertification.com](mailto:info@absolutequalitycertification.com)  
Certificate is the property of Absolute Quality Certification Pvt. Ltd. and shall be returned immediately when demanded.

## FACILITIES

AMADA Laser Cutting machine  
 AMADA CNC Turret Punching machine  
 AMADA CNC Hydraulic Press Brake  
 MESSER Plasma cutting machine  
 Welding machines [MIG/TIG]  
 Computers and allied equipment,  
 DG set and Compressor



## WORK FORCE

Office staff	- 8
Skilled workers	- 18
Semi skilled	- 12
Unskilled	- 10



## ADDITIONAL FACILITIES / SISTER CONCERN

Powder coating facility having  
7 tank process  
3 nos spraying booth  
Gas fired Oven (2m x 2.2m x 6m)  
Suitable to batch production



## WORK FORCE

Office staff	- 2
Skilled workers	- 4
Semi skilled	- 3
Unskilled	- 3





## CLIENT PROFILE

Power Control Equipments  
Marmon Food & Beverage  
Biesse Manufacturing  
Maini Materials Movement  
Nordson India Pvt Ltd  
Nanopix ISS Pvt. Ltd  
Rittal India Pvt. Ltd  
Lee Boy India  
Frenzelit expansion joint

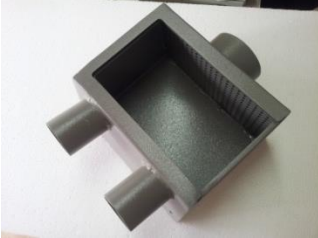


## PRODUCTS

Control Panels  
Automotive Parts  
Machine cladding & parts  
Powder coating booths  
Cabin parts for L&T, Telcon, Komatsu  
Fuel tank, Hyd tank, Fenders



## PARTS GALLERY



## PRODUCTS.....



Canopy

Cabins



## PRODUCTS.....

Parts for wood  
working machine



Expansion joints

## PRODUCTS.....



Storage Racks

Coming together is a beginning  
Keeping together is Progress  
Working together is Success



## THANK YOU



Pl. Contact :

A-352[a], 8th Main, 2nd Stage,  
Peenya Industrial Area,  
Bangalore-560 058, India  
Ph: 9480696921 /26/ 29

E-mail: [ariesprecision@gmail.com](mailto:ariesprecision@gmail.com)

Website: [www.apt-india.com](http://www.apt-india.com)